



Nokia ET Interface

Adapter Module

Nokia ET (Ethernet) Interface with bridging is a highly integrated solution for internetworking applications like Ethernet over TDM. The ET adapter is a plug-and-play and a non configurable module used for bridging and dedicated Internet access applications.

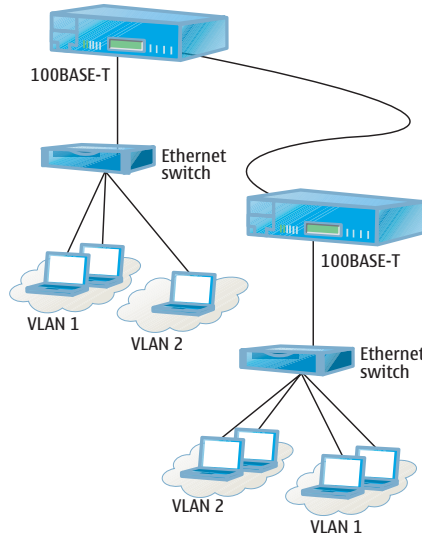
Nokia ET Interface can be connected to PCs, hubs and other LAN equipment by using a 100Base-T with an RJ-45 connector. The capacity of the WAN interface is nx64 kbit/s up to 2Mbit/s.

NOKIA
Connecting People

The ET Interfaces are designed to bring in bridging capabilities to Nokia Dynanet (DNT) SHDSL modems. It is also compatible with Dynanet Ethernet Interface Unit that is used together with control units DM2, DB2, DN2 and ACM2 V2.

In the application example, the end customer LANs can be separated into different subnets by using VLANs. Ethernet frames with VLAN tags (IEEE 802.1Q) are transparently forwarded to the WAN.

Ethernet networks can be extended to the customer premises because the ET Interface bridge adapter contains the HDLC WAN interface. Interoperability with routers from other major manufacturers is provided with a standard HDLC protocol.



Product features

Sales Item

ET-adapter 100BASE-T E66210.32

Bridge

Receive buffer size	1728 packets
Transmit buffer size	320 packets
Rejected frames	none
Maximum transfer unit (MTU)	2016 bytes

LAN

Link speed	100 Mbps
Link duplex status	Full duplex
Flow control	Enabled
Cable	UTP CAT5

WAN

HDLC	RFC1662
FCS	16 bytes
Line speed	n x 64 kbps (n = 1...32)

